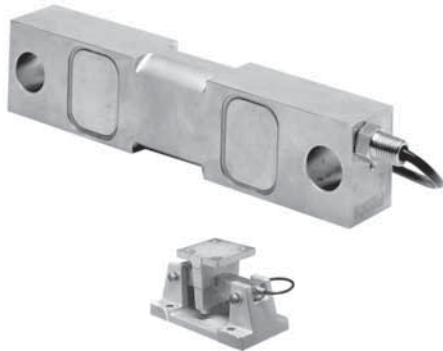


Double-Ended Shear Beam Load Cell



65016-TWA



FEATURES

- Rated capacities of 1000 to 300,000 pounds
- Insensitive to side loads and bending moments
- High output - well suited to high deadload/low liveload applications
- Load cells have matched outputs for multi-cell systems
- Excellent combined error and repeatability
- Integral conduit adaptor
- *Sensorgage*™ sealed to IP67 standards
- Factory Mutual System Approved for Classes I, II, III; Divisions 1 and 2; Groups A through G. Also, non-incendive ratings (No barriers!).

OPTIONAL FEATURES

- Weighing assemblies available - 65016 TWA
- Extended temperature ranges available to 400°F/200°C

DESCRIPTION

The double-ended mounting provides good restraint to possible movement of the tanks and, in many cases, eliminates the need for check rods. The double Shear Beam design gives excellent performance for high capacity loading.

The output is rationalized to facilitate multiple-cell application.

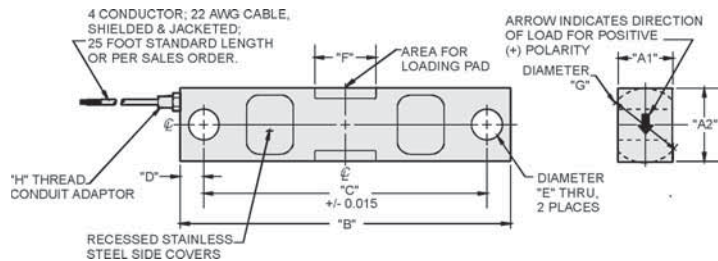
This load cell is constructed of alloy tool steel and is potted to IP67 providing excellent protection against moisture and humidity.

APPLICATIONS

- Tank, bin and silo weighing
- Batching, blending and mixing systems
- Level and inventory monitoring

OUTLINE DIMENSIONS in inches

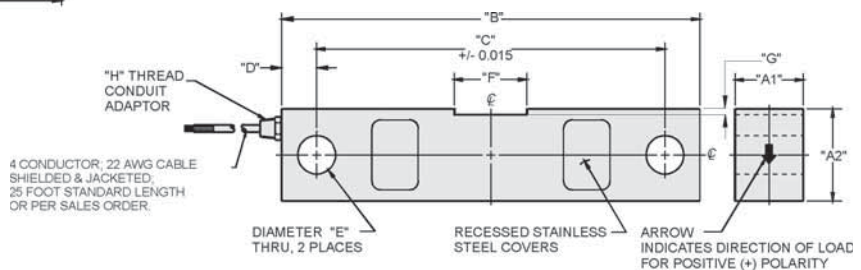
1000 to 50000lb capacities



Wiring

+ Excitation	Red
- Excitation	Black
+ Output	Green
- Output	White

75000 to 300000lb capacities



CAPACITY	A1	A2	B	C	D	E	F	G	H
1K - 5K	1.25	1.25	7.50	6.25	0.62	0.50	1.22	1.25	1/4-18NPT
10K - 25K	1.44	1.94	8.75	7.50	0.62	0.81	1.62	1.99	1/4-18NPT
35K	1.50	2.50	8.75	7.50	0.62	0.81	1.62	2.50	1/4-18NPT
50K	2.44	2.94	13.50	11.50	1.00	1.31	3.25	2.99	1/2-14NPT
75K	2.44	2.94	13.50	11.50	1.00	1.31	3.12	0.18	1/2-14NPT
100K - 125K	2.94	3.94	18.50	15.00	1.75	1.63	3.25	0.25	1/2-14NPT
200K	3.80	5.80	20.50	17.00	1.75	2.13	4.13	0.50	1/2-14NPT
300K	3.80	5.80	23.50	18.75	2.38	2.63	5.13	0.50	1/2-14NPT

Capacities are in pounds.



SPECIFICATIONS

PARAMETER	VALUE	UNIT
Rated capacity-R.C. (E_{max})	1K, 1.5K, 2.5K, 5K, 10K, 15K, 25K, 35K, 50K, 75K, 100K, 125K, 200K, 300K	lbs
NTEP/OIML Accuracy class	Standard	
Maximum no. of intervals (n)	--	
Rated output-R.O.	3.0	mV/V
Rated output tolerance	0.25	±% mV/V
Zero balance	1.0	±% FSO
Combined error	0.03	±% FSO
Non-repeatability	0.01	±% FSO
Creep error (20 minutes)	0.03	±% FSO
Temperature effect on zero	0.0015	±% FSO/°F
Temperature effect on output	0.0008	±% of load/°F
Compensated temperature range	14 to 104 (-10 to 40)	°F (°C)
Operating temperature range	0 to 150 (-18 to 65)	°F (°C)
Storage temperature range	-60 to 185 (-50 to 85)	°F (°C)
Sideload rejection ratio	500:1	
Safe sideload	100	% of R.C.
Maximum safe central overload	150	% of R.C.
Ultimate central overload	300	% of R.C.
Excitation, recommended	15	Vdc or Vac rms
Excitation, maximum	25	Vdc or Vac rms
Input impedance	686 - 714	Ω
Output impedance	699 - 707	Ω
Insulation resistance at 50VDC	>1000	MΩ
Material	Nickel plated alloy tool steel	
Environmental protection	IP67	

FSO -Full Scale Output

All specifications subject to change without notice.

VISHAY TRANSDUCERS (VT) SALES OFFICES

VT Americas
 City of Industry, CA
 PH: +1-626-858-8899
 FAX: +1-626-332-3418
 vt.us@vishaymg.com

VT Netherlands
 Breda
 PH: +31-76-548-0700
 FAX: +31-76-541-2854
 vt.nl@vishaymg.com

VMG UK
 Basingstoke
 PH: +44-125-646-2131
 FAX: +44-125-647-1441
 vt.uk@vishaymg.com

VMG Israel
 Netanya
 PH: +972-9-863-8888
 FAX: +972-9-863-8800
 vt.il@vishaymg.com

VMG Germany
 Heilbronn
 PH: +49-7131-3901-260
 FAX: +49-7131-3901-2666
 vt.de@vishaymg.com

VT China
 Tianjin
 PH: +86-22-2835-3503
 FAX: +86-22-2835-7261
 vt.prc@vishaymg.com

VMG France
 Chartres
 PH: +33-2-37-33-31-20
 FAX: +33-2-37-33-31-29
 vt.fr@vishaymg.com

VT Taiwan*
 Taipei
 PH: +886-2-2696-0168
 FAX: +886-2-2696-4965
 vt.roc@vishaymg.com
 *Asia except China



Notice

Specifications of the products displayed herein are subject to change without notice. Vishay Intertechnology, Inc., or anyone on its behalf, assumes no responsibility or liability for any errors or inaccuracies.

Information contained herein is intended to provide a product description only. No license, express or implied, by estoppel or otherwise, to any intellectual property rights is granted by this document. Except as provided in Vishay's terms and conditions of sale for such products, Vishay assumes no liability whatsoever, and disclaims any express or implied warranty, relating to sale and/or use of Vishay products including liability or warranties relating to fitness for a particular purpose, merchantability, or infringement of any patent, copyright, or other intellectual property right.

The products shown herein are not designed for use in medical, life-saving, or life-sustaining applications. Customers using or selling these products for use in such applications do so at their own risk and agree to fully indemnify Vishay for any damages resulting from such improper use or sale.