

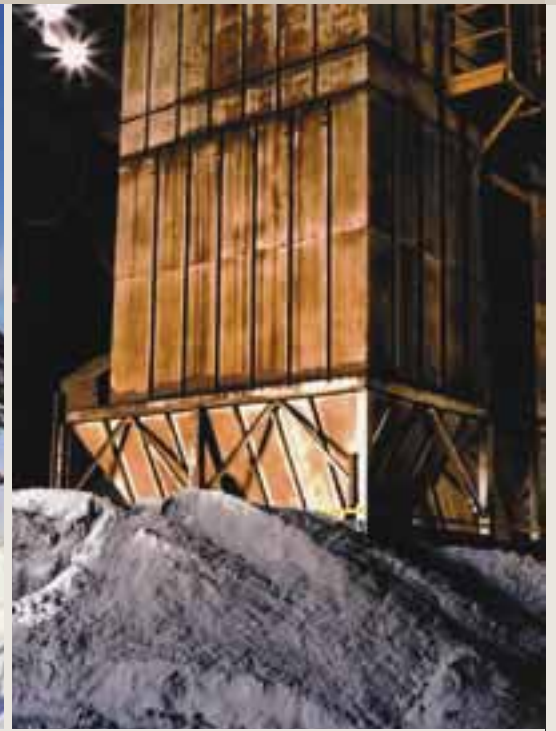


VISHAY INTERTECHNOLOGY, INC.

INSTRUMENTS

## WEIGHT INDICATORS SERIES

Vishay Transducers



PRODUCT OVERVIEW

# Weight Indicators

Vishay Transducers

## One-Stop Shop for Weighing Applications

In combination with Vishay Transducers' load cell product line, our weight indicators provide complete solutions for weighing applications.

### Covering most weighing applications

- Platforms
- Weighbridges
- Inventory Control
- Material Handling
- Process Control

### Wide range of installations types

- Desktop
- Wall mount
- Panel mount
- DIN rail mount

### World-wide weighing approvals

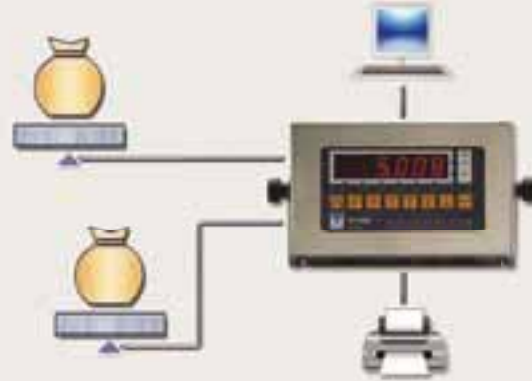
- OIML R-76
- NTEP H44

APPLICATION SELECTION GUIDE											
Application	Products										
	VT 50	VT 60	VT 100	VT 120	VT 200/220	VT 300	VT 400	VT 500	PS-1040	PS-1045	PS-1050
Platforms, Bench Scales	●	●	●	●	●	●					
Counting					●	●					
Weighbridges	●	●	●	●	●	●					
Material Handling						○	●	●	●	●	●
Bagging Scales								●			
Hopper Scales								●			
Stand-alone Batching							●	●	○	○	○
Networked Batching							○	●	●	●	●

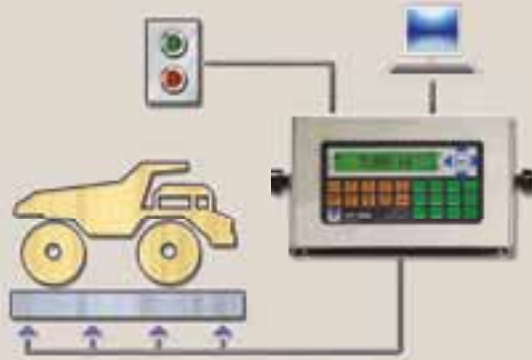
● Fully compatible with the application requirements  
 ● Partially compatible with the application requirements  
 ○ Limited compatibility with the application requirements

**APPLICATIONS**

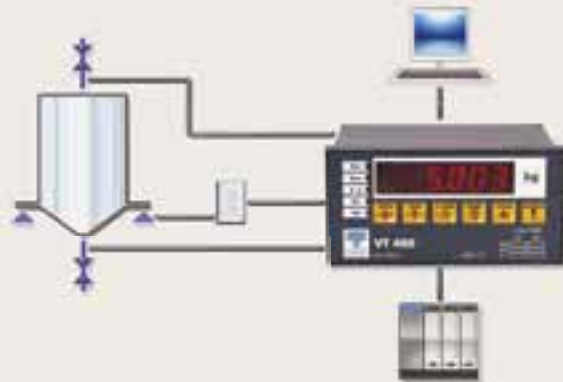
**Platform, Bench Scales  
Counting Scales  
Inventory Control  
Various Industrial Weighing Systems**



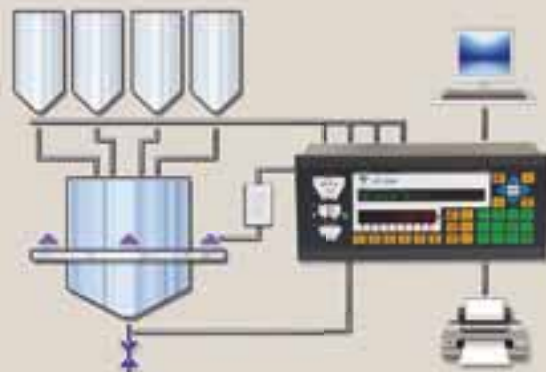
**Weighbridges  
Inventory Control  
Industrial Weighing Systems  
Bench, Floor, and Counting Scales**



**Material Handling  
Process Weighing  
Inventory Control**

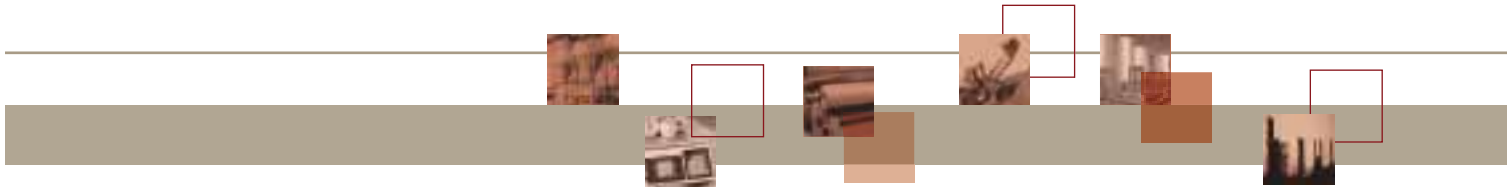


**Hopper Scales  
Gross and Net Weighers  
Drum-Filling Scales  
Bagging Scales**

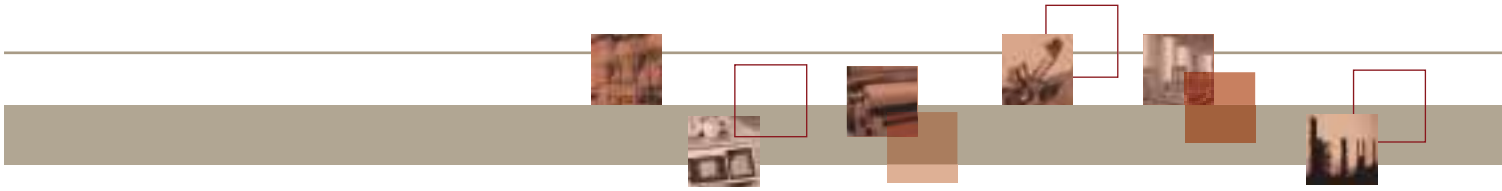


**FEATURES AND SPECIFICATIONS**

Product	Application	Enclosure	Mounting Options				Display
			Desktop	Wall	Panel	DIN-Rail	
<b>VT50</b>	Platform, Bench Scales, Inventory Monitoring	ABS	x	x	With Adaptor		LED
<b>VT60</b>	Platform, Bench Scales, Inventory Monitoring	ABS	x	x	With Adaptor		LCD
<b>VT100</b>	Platform, Bench Scales, Inventory Monitoring	ABS	x	x	With Adaptor		LED
<b>VT120</b>	Platform, Bench Scales, Inventory Monitoring	ABS	x	x	With Adaptor		LCD
<b>VT200</b>	Platform, Bench Scales, Inventory Monitoring, Counting	Stainless Steel		x			LED
		Aluminum	x	x			
<b>VT220</b>	Platform, Bench Scales, Inventory Monitoring, Counting	Stainless Steel		x			LCD
		Aluminum	x	x			
<b>VT300</b>	Weighbridge, Platforms, Counting	Stainless Steel		x			LCD
		Aluminum	x	x			
<b>VT400</b>	Mixing, Stand-alone Batching	ABS			x		LED
<b>VT500</b>	Bulk Handling—Hopper Scales, Belt Weigher, Bagging Scales	Steel			x		LED + VFD 2x40 Characters
<b>PS-1040</b>	Batching Systems	ABS				x	-
<b>PS-1045</b>	Batching Systems	ABS				x	LED
<b>PS-1050</b>	Batching Systems	ABS			x		LED



No. of Keys	Key Functionality	IP Level	Communication	Set Points	Approvals	Battery Operation
5	Basic	IP54	RS232	-	-	-
5	Basic	IP54	RS232	-	-	Optional
5	Basic	IP54	RS232	-	OIML 10,000 NTEP 10,000	-
5	Basic	IP54	RS232	-	OIML 10,000 NTEP 10,000	Optional
8	Basic	IP65	RS232 Option RS485	2	OIML 10,000 NTEP 10,000	-
		IP54				
8	Basic	IP65	RS232 Option RS485	2	OIML 10,000 NTEP 10,000	-
		IP54				Optional
28	Alphanumeric + functions	IP65	RS232 Option RS485	2	OIML 10,000 NTEP 10,000	-
		IP54				Optional
5	Basic	IP40; Optional IP54 Panel Cover	RS232 Option RS485	2	OIML 10,000 NTEP 10,000	-
33	Alphanumeric + functions	IP54 Front Panel; IP40 Enclosure	4 ch. RS232/RS485 Printer	32 (I) 32(O)	OIML 10,000 NTEP 10,000	-
-	-	IP20	RS485; 0–10 V; 4–20 mA		-	-
5	Basic	IP20	RS485; MODBus; 4–20 mA; 0–10 V		-	-
5	Basic	IP20	RS485; MODBus; 4–20 mA; 0–10 V; Profibus (option)	2	-	-



Products	Features
<p><b>VT 400</b></p> 	<p>Weight controller provides weighing and control functions for industrial batch/blend/mix process systems. Two opto-isolated control outputs, a choice of up to two serial interface (RS-232 and RS-485) an analog output (optional) allow full communication with higher level PCs and PLCs. Up to 30 units can be interconnected through the RS-485 network.</p> <ul style="list-style-type: none"> <li>• Panel mount</li> <li>• 70 Samples per second</li> <li>• Two opto-isolated setpoint outputs</li> <li>• RS232 and/or RS485 serial ports</li> <li>• Alibi (Flash) memory</li> <li>• Power supply—24 Vdc</li> <li>• Analog output 0–10 Vdc or 4–20 mA (optional)</li> </ul>
<p><b>VT 500</b></p> 	<p>Weighing controller designed for automatic discontinues weighing systems in bulk handling processes. It offers high-accuracy, high speed weighing, extensive control capabilities, easy adaptation and optimization of the process parameters and powerful data management.</p> <ul style="list-style-type: none"> <li>• Process control terminal</li> <li>• Special software for hopper scales and bagging scales.</li> <li>• LED and VFD display</li> <li>• Full alphanumeric keyboard</li> <li>• 228 Samples per second</li> <li>• In-flight compensation capability</li> <li>• Two analog output for PLC interface (option)</li> <li>• 16 opto-isolated outputs</li> <li>• 16 digital inputs</li> <li>• Process parameters protected by password</li> </ul>
<p><b>PS-1040/PS-1045</b></p> 	<p>Batching system weighing indicator provides digital or isolated analog output signal for tank/bin/hopper weighing systems. High level serial communication is available in RS-232, or RS-485 format with Modbus RTU or Profibus protocol. Up to 32 transmitters can be connected point-to-point.</p> <ul style="list-style-type: none"> <li>• DIN rail mount digital/analog transmitter</li> <li>• 10 Points load cell linearization</li> <li>• 0–10 Vdc or 4–20 mA isolated analog output</li> <li>• Peak-hold measurement</li> <li>• Datasheet or dead load calibration</li> <li>• Serial communication with Modbus RTU protocol</li> <li>• Profibus interface (option)</li> </ul>
<p><b>PS-1050</b></p> 	<p>Batching system weighing indicator provides digital or isolated analog output signal for tank/bin/hopper weighing systems. An isolated 0–10 V or 4–20 mA analog output provides factory floor communication for a data logger, remote panel meter, or PLC input. High level serial communication is available in RS-232, or RS-485 format with Modbus RTU or Profibus protocol. Up to 32 transmitters can be connected point-to-point.</p> <ul style="list-style-type: none"> <li>• Panel mount</li> <li>• 10 Points load cell linearization</li> <li>• Selectable 0–10 Vdc or 4–20 mA isolated analog output</li> <li>• Peak-hold measurement</li> <li>• Datasheet or dead load calibration</li> <li>• Serial communication with Modbus RTU protocol</li> <li>• Profibus interface (option)</li> </ul>



# Weight Indicators

Vishay Transducers

Products	Features
<p><b>VT 50/VT 100</b></p> 	<p>General-purpose weight indicators for platform, bench scales and weighbridges. The heavy-duty plastic enclosure is designed for desktop, wall (tilt) mount, or post mount. RS-232 serial port enables connection to PC and serial printer. Ticket formats can be downloaded via the keypad or communication port. VT 100 is OIML- and NTEP-approved to 10,000d.</p> <ul style="list-style-type: none"> <li>• LED display</li> <li>• 30 Samples per second</li> <li>• 3-Level digital filtering</li> <li>• Serial printer and EDP/PC support</li> <li>• Programmable ticket format with consecutive transaction numbering</li> </ul>
<p><b>VT 60/VT 120</b></p> 	<p>General-purpose weight indicators for platform, bench scales and weighbridges. The heavy-duty plastic enclosure is designed for desktop, wall (tilt) mount, or post mount. RS-232 serial port enables connection to PC and serial printer. Ticket formats can be downloaded via the keypad or communication port. VT 120 is OIML- and NTEP-approved to 10,000d.</p> <ul style="list-style-type: none"> <li>• LCD display</li> <li>• Rechargeable battery (option)</li> <li>• 30 Samples per second</li> <li>• 3-Level digital filtering</li> <li>• Serial printer and EDP/PC support</li> <li>• Programmable ticket format with consecutive transaction numbering</li> </ul>
<p><b>VT 200/VT 220</b></p>  <p>(aluminum case)</p>  <p>(stainless steel case)</p>	<p>Versatile unit with a wide range of industrial and commercial applications. Automatic date and time storage with the real-time clock option clearly documents all printout records. Additional digital and analog inputs and outputs can be supported by optional add-on modules.</p> <ul style="list-style-type: none"> <li>• Dual range and dual interval</li> <li>• Counting mode</li> <li>• 70 Samples per second</li> <li>• Serial printer support with programmable ticket format</li> <li>• Alibi (Flash) memory</li> <li>• Stainless steel enclosure, IP65; or aluminum enclosure, IP54</li> <li>• RS485 serial interfaces (option)</li> <li>• Real-time clock (option)</li> <li>• 2 Setpoints, opto-isolated (option)</li> <li>• Analog output 0–10 Vdc or 4–20 mA (option)</li> <li>• Dual scale operation (option)</li> </ul>
<p><b>VT 300</b></p> 	<p>Designed primarily for weighbridge applications. Its software manages various transactions, allowing choices of customer, material type or truck identification. All the activities are stored in non-volatile memory and available to be reported in 4 programmable printing formats.</p> <ul style="list-style-type: none"> <li>• Dual range and dual interval</li> <li>• 27 Keys, pseudo-alphanumeric and functions keyboard.</li> <li>• 16 Character dot-matrix LCD display with backlight.</li> <li>• 2 Opto-isolated setpoints</li> <li>• Alibi (Flash) memory</li> <li>• Programmable transactions database</li> <li>• 4 programmable ticket formats</li> <li>• Counting mode</li> <li>• Dual scale operation (option)</li> <li>• Analog output (option)</li> <li>• RS485 serial interface (option)</li> </ul>

**Vishay Transducers:**

Vishay BLH • Vishay Celtron • Vishay Nobel • Vishay Sensortronics • Vishay TedeA-Huntleigh

**Vishay Micro-Measurements:**

Vishay Micro-Measurements • Vishay BLH SR-4®



One of the World's Largest  
**Manufacturers**  
of Discrete Semiconductors and Passive Components

WORLDWIDE SALES CONTACTS

**THE AMERICAS**

**VISHAY TRANSDUCERS AMERICAS**

677 ARROW GRAND CIRCLE  
COVINA, CA 91722  
USA  
PH: +1-800-722-0820 (TOLL FREE)  
+1-626-858-8899  
FAX: +1-626-332-3418  
E-MAIL: VT.US@VISHAYMG.COM

**VISHAY TRANSDUCERS CANADA**

12 STEINWAY BOULEVARD, UNIT 1  
TORONTO, ONTARIO M9W 6M5  
CANADA  
PH: +1-800-567-6098 (TOLL FREE)  
+1-416-251-2554  
FAX: +1-416-251-2690  
E-MAIL: VT.CAN@VISHAYMG.COM

**ASIA**

**VISHAY TRANSDUCERS TAIWAN\***

15 FL, NO. 86, SEC.1 SHINTAI 5TH RD.  
SHIJR CITY, TAIPEI, 221  
TAIWAN, R. O. C.  
PH: +886-2-2696-0168  
FAX: +886-2-2696-4965  
E-MAIL: VT.ROC@VISHAYMG.COM  
\*ASIA EXCEPT CHINA

**VISHAY TRANSDUCERS CHINA**

NO. 5 BINGUAN NAN DAO YOUYI RD.  
HEXI DISTRICT, TIANJIN CHINA  
CODE 300061  
PH: +86-22-2835-3503  
FAX: +86-22-2835-7261  
E-MAIL: VT.PROC@VISHAYMG.COM

**EUROPE**

**VISHAY MEASUREMENTS GROUP  
GERMANY**

TATSCHENWEG 1  
74078 HEILBRONN  
GERMANY  
PH: +49-7131-3901-260  
FAX: +49-7131-3901-2666  
E-MAIL: VT.DE@VISHAYMG.COM

**VISHAY TRANSDUCERS SWEDEN**

P.O. BOX 423  
SE-691 27 KARLSKOGA  
SWEDEN  
PH: +46-586-63000  
FAX: +46-586-63099  
E-MAIL: VT.SE@VISHAYMG.COM

**VISHAY MEASUREMENTS GROUP UK**

STROUDLEY ROAD, BASINGSTOKE  
HAMPSHIRE RG24 8FW  
UNITED KINGDOM  
PH: +44-125-646-2131  
FAX: +44-125-647-1441  
E-MAIL: VT.UK@VISHAYMG.COM

**VISHAY TRANSDUCERS NORWAY  
SYSTEMS PRODUCTS**

BROBEKKVEIEN 80  
NO-0582 OSLO  
NORWAY  
PH: +47-22-88-40-90  
FAX: +47-22-88-40-99  
E-MAIL: VT.NO@VISHAYMG.COM

**VISHAY MEASUREMENTS GROUP  
FRANCE**

16 RUE FRANCIS VOVELLE  
28000 CHARTRES  
FRANCE  
PH: +33-2-37-33-31-20  
FAX: +33-2-37-33-31-29  
E-MAIL: VT.FR@VISHAYMG.COM

**VISHAY TRANSDUCERS FINLAND  
SYSTEMS PRODUCTS**

JORVAS HITECH CENTER  
FI-02420 JORVAS  
FINLAND  
PH: +358-(0)9-8194-220  
FAX: +358-(0)9-8194-2211  
E-MAIL: VT.FI@VISHAYMG.COM

**VISHAY MEASUREMENTS GROUP  
ISRAEL**

5 HAZORAN STREET  
P.O. BOX 8381, NEW INDUSTRIAL ZONE  
NETANYA 42506  
ISRAEL  
PH: +972-9-863-8888  
FAX: +972-9-863-8800  
E-MAIL: VT.IL@VISHAYMG.COM

**Regional Distributor**



803, Riqqa Palace Building  
Al-Maktum Ave.  
P.O.Box 181802 Dubai, UAE  
Tel: +9714 - 2270081  
Fax: +9714 - 2239962  
E-mail: rcsco@eim.ae  
www.rcs-co.com

www.vishaymg.com  
www.vishay.com