

## Aluminum Shear Beam Load Cell



### FEATURES

- Capacities 250-1000kg
- Low profile for industrial platforms
- Anodized aluminum construction
- 6-wire (sense) circuit
- IP67 protection
- Low cost

Model 3310 is a low profile shear beam load cell designed for high accuracy platform scales, pallet scales and process weighing applications.

It has high immunity to shock or side loading and is available in 2mV/V sensitivity.

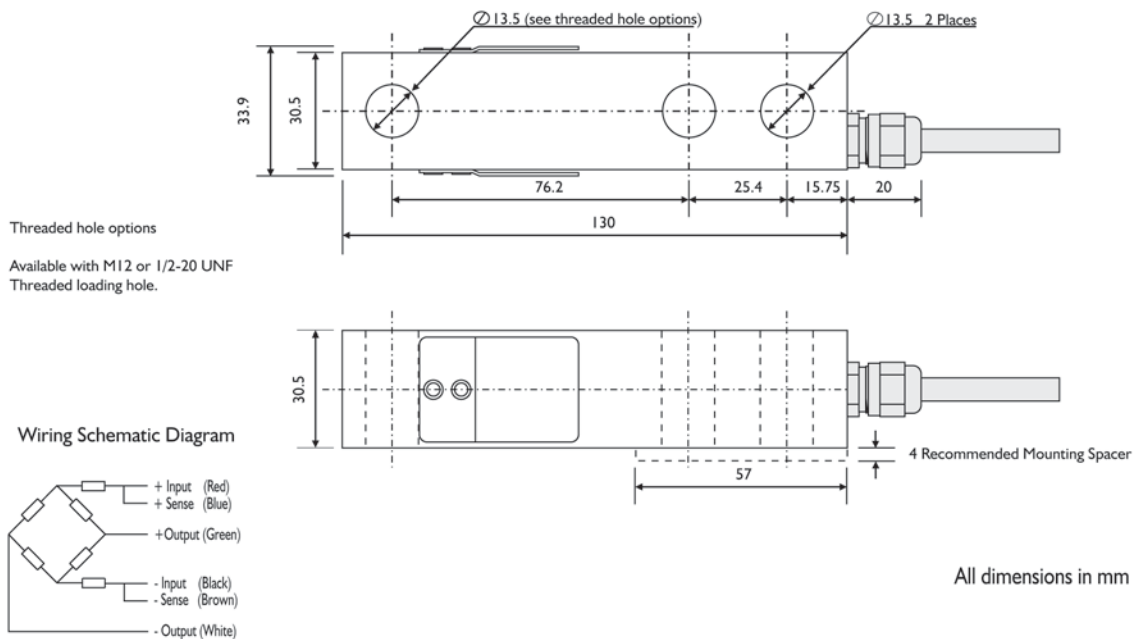
A special humidity resistant protective coating assures long term stability over the entire compensated temperature range.

The two additional sense wires feed back the voltage reaching the load cell. Complete compensation of changes in lead resistance due to temperature change and/or cable extension is achieved by feeding this voltage into the appropriate electronics.

SPECIFICATIONS				
GRADE	E	F	G	UNITS
Rated capacities: Metric	250, 500, 750, 1000			kg
Rated Output	2.0 ± 0.10%			mV/V
Zero Return after 30 mins	0.050	0.025	0.0170	± % of applied load
Total Error	0.050	0.030	0.0200	± % of applied load
Temperature Effect: On Zero	0.007	0.0035	0.0023	± % of rated output/°C
On Output	0.004	0.0014	0.0012	± % of applied load/°C
Zero Balance	3.0	2.0	2.0	± % of rated output
Temperature Range: Operating	- 30 to + 70			°C
Compensated	- 10 to + 40			°C
Safe Overload	150			% of rated capacity
Ultimate Overload	300			% of rated capacity
Excitation: Recommended	10			Volts AC or DC
Maximum	15			Volts AC or DC
Input Impedance	415 ± 15			Ohms
Output Impedance	350 ± 3			Ohms
Insulation Impedance	> 2000			MegaOhms
Deflection at Rated Capacity	< 0.4			mm
Weight	0.5			kg
Construction	Anodized Aluminum			
Environmental Protection	IP67			
Cable	3 meters (standard), 6 wire polyurethane jacket, dual floating screen			

Recommended torque 100lb - ft (136Nm)

## Aluminum Shear Beam Load Cell

**DIMENSIONS** in millimeters**VISHAY TRANSDUCERS (VT) - SALES OFFICES**

<b>VT Americas</b> Covina, CA PH: +1-800-722-0820 FAX: +1-626-332-3418 vt.us@vishaymg.com	<b>VT Canada</b> Toronto PH: +1-416-251-2554 FAX: +1-416-251-2690 vt.can@vishaymg.com	<b>VT UK</b> Basingstoke PH: +44-125-646-2131 FAX: +44-125-647-1441 vt.uk@vishaymg.com	<b>VT Sweden</b> Karlskoga PH: +46-586-630-00 FAX: +46-586-630-99 vt.se@vishaymg.com	<b>VT Germany</b> Heilbronn PH: +49-7131-3901-260 FAX: +49-7131-3901-2666 vt.de@vishaymg.com	<b>VT France</b> Chartres PH: +33-2-37-33-31-20 FAX: +33-2-37-33-31-29 vt.fr@vishaymg.com
<b>VT Spain</b> Madrid PH: +34-91-7218890 FAX: +34-91-7219056 vt.es@vishaymg.com	<b>VT Finland</b> Jorvas PH: +358-(0)9-8194-220 FAX: +358-(0)9-8194-2211 vt.fi@vishaymg.com	<b>VT Norway</b> Oslo PH: +47-22-21-40-70 FAX: +47-22-21-92-10 vt.no@vishaymg.com	<b>VT Israel</b> Netanya PH: +972-9-863-8888 FAX: +972-9-863-8800 vt.il@vishaymg.com	<b>VT China</b> Tianjin PH: +86-22-2835-3503 FAX: +86-22-2835-7261 vt.prc@vishaymg.com	<b>VT Taiwan*</b> Taipei PH: +886-2-2696-0168 FAX: +886-2-2696-4965 vt.roc@vishaymg.com *Asia except China



### Notice

Specifications of the products displayed herein are subject to change without notice. Vishay Intertechnology, Inc., or anyone on its behalf, assumes no responsibility or liability for any errors or inaccuracies.

Information contained herein is intended to provide a product description only. No license, express or implied, by estoppel or otherwise, to any intellectual property rights is granted by this document. Except as provided in Vishay's terms and conditions of sale for such products, Vishay assumes no liability whatsoever, and disclaims any express or implied warranty, relating to sale and/or use of Vishay products including liability or warranties relating to fitness for a particular purpose, merchantability, or infringement of any patent, copyright, or other intellectual property right.

The products shown herein are not designed for use in medical, life-saving, or life-sustaining applications. Customers using or selling these products for use in such applications do so at their own risk and agree to fully indemnify Vishay for any damages resulting from such improper use or sale.