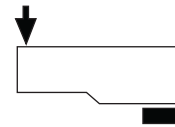


Model **ACB** Single Ended Beam Load Cell



APPROVALS

	C6 $n_{Ic} \leq 6000$ $\gamma \leq 20000$
	II1GD EEx ia IIC T4/T6 or II1D T70°C or II3G EEx nA II T6 or II3D T70°C or IM1 EEx ia I



APPLICATIONS

Platform Scales	Silo/Hopper Weighing	Belt Scales	Overhead Track Scales

DESCRIPTION

The ACB is a high performance stainless steel beam type load cell. An integral mounting step removes the need for spacer plates and ensures optimum “bolt down” conditions.

This product is suitable for small and medium platform scales, hybrid scales, pallet weighers and process weighing.

The fully welded construction and the cable entry ensure that this product can be used successfully in harsh environments found in the food, chemical and allied process industries.

FEATURES

- Low profile, stainless steel construction
- Hermetically sealed, IP66 and IP68
- Certified to OIML R60, 6000d
- 1000 Ohm bridge impedance
- Current calibration output (SC) ensures easy and accurate connection of multiple load cells
- Integral mounting step
- ATEX versions are available for use in potentially explosive atmospheres, caused by gas or dust
- Capacities: **500 → 5000 kg**

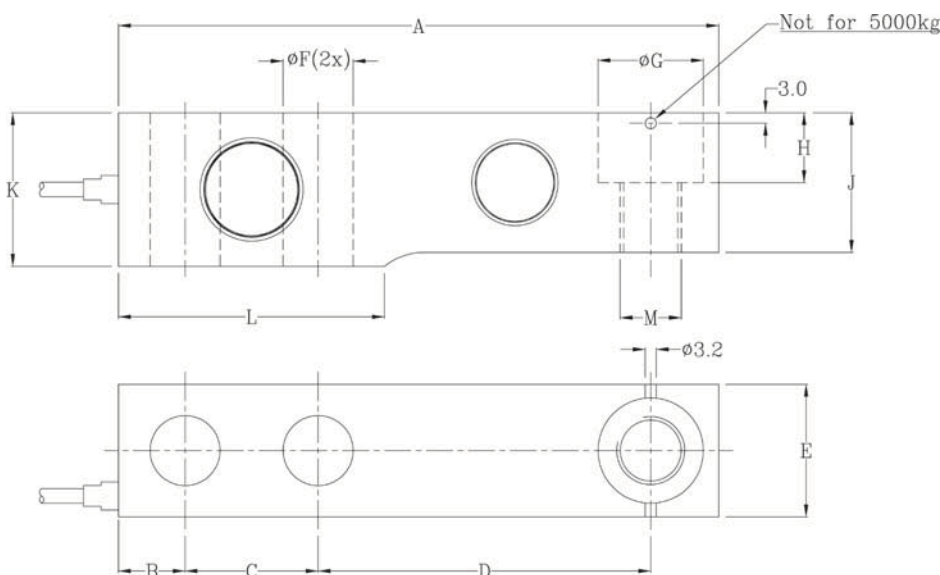
ACB SPECIFICATIONS

PARAMETER	VALUE			UNIT
Standard capacities (E_{max})	500, 1000, 2000, 5000			kg
Accuracy class according to OIML R-60	Non-Approved	C3	C6	
Maximum no. of verification intervals (n_{ic})		3000	6000	
Minimum verification interval ($V_{min}=E_{max}/Y$)		$E_{max}/15,000$	$E_{max}/20,000$	
Rated output (=S)	2			mV/ V
Tolerance on rated output	0.02			±mV/ V
Zero balance	1.0			±% FSO
Combined error	0.0500	0.0230	0.0120	±% FSO
Non-repeatability	0.0700	0.0350	0.0180	±% FSO
Minimum dead load output return	0.0500	0.0166	0.0083	±% applied load
Creep error (30 minutes)	0.0600	0.0245	0.0120	±% applied load
Temp. effect on minimum dead load output	0.0250	0.0117	0.0058	±%FSO/5°C
Temp. effect on sensitivity	0.0250	0.0088	0.0045	±% applied load/5°C
Maximum safe over load	150			% E_{max}
Ultimate over load	300			% E_{max}
Maximum safe side load	100			% E_{max}
Deflection at E_{max}	0.20, 0.20, 0.22, 0.31			mm
Excitation voltage	5 to 12			V
Maximum excitation voltage	15			V
Input resistance	1000 ± 50			Ω
Output resistance	1000 ± 10			Ω
Insulation resistance	≥ 5000			MΩ
Compensated temperature range	-10 to +40			°C
Operating temperature range	-40 to +80			°C
Storage temperature range	-40 to +90			°C
Element material (DIN)	Stainless steel 1.4542			
Sealing (DIN 40.050 / EN60.529)	IP66 and IP68			
SC-Version (current calibration)	Standard			
Recommended torque on fixation bolts	0.5 - 2t: 150 / 5t: 550			Nm

SC-version: The rated output and the output resistance are balanced in such a way, that the output current is calibrated to within 0.05% of a reference value. This allows easy parallel connection of the load cells.

FSO: Full Scale Output

OUTLINE DIMENSIONS



Capacity	500kg	1000kg	2000kg	5000kg
A	130.0	130.0	130.0	17.2
B	15.5	15.5	15.5	19.1
C	25.4	25.4	25.4	38.1
D	76.2	76.2	76.2	95.3
E	31.8	31.8	31.8	38.0
ØF	13.0	13.0	13.0	20.5
ØG	20.5	20.5	20.5	30.2
H	14.2	14.2	14.2	20.0
J	26.0	27.95	31.95	40.0
K	31.8	31.8	35.8	44.0
L	57.1	57.1	57.1	76.2
M	M12	M12	M12	M20

Note: Dimensions in millimeters

Cable specifications:

Cable length:	3m for 500, 1000 kg 6m for 2000, 5000 kg
Excitation +	Green
Excitation -	Black
Output +	White
Output -	Red
Sense +	Yellow
Sense -	Blue
Shield	Transparent

REVERE TRANSDUCERS EUROPE B.V.
 Ramshoorn 7
 Postbus 6909, 4802 HX Breda
 The Netherlands
 Tel: (+31) 76-5480700
 Fax: (+31) 76-5412854
 E-mail: info@revere.nl
www.revere.nl

Rabbit Control Systems
 Automation & Control Engineering



803, Riqqa Palace Building
 Al-Maktum Ave. opposite Deira Etisalat
 P.O.Box 181802 Dubai, UAE
 Tel: +9714 - 2270081
 Fax: +9714 - 2239962
 E-mail: rcsc@eim.ae
www.rcs-co.com