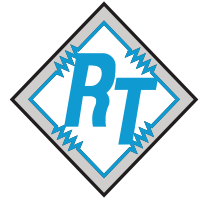


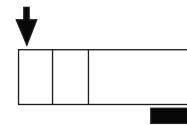
# Model 9123

## Single Ended Beam Load Cell



### APPROVALS

	<b>C4</b> $n_{lc} \leq 4000$ $Y \leq 18000$
	<b>A5</b> $n_{lc} \leq 5000$
	<b>Factory Mutual System</b>



### APPLICATIONS

Platform Scales	Silo/Hopper Weighing	Belt Scales	Overhead Track Scales	Pallet Scales

### DESCRIPTION

The 9123/5123 are low profile single ended shear beam type load cell. The 9123 is stainless steel whilst the 5123 nickel plated tool steel.

These products are suitable for small and medium platform scales, overhead track scales, hopper scales and process weighing applications.

Reliable sealing is ensured by the proprietary TRANSEAL potting compound and additional mechanical protection of the strain gage area.

Ease of installation is made possible through the use of a partially threaded hole to accept levelling feet, load buttons or loading cables.

### FEATURES

- Low profile construction
- Certified to OIML R-60, 4000d and NTEP class III, 5000 divisions
- Sealing: IP67 (DIN 40.050)
- Threaded load hole
- FM certified for use in potentially explosive atmosphere
- Capacities: **500 → 5000 kg**

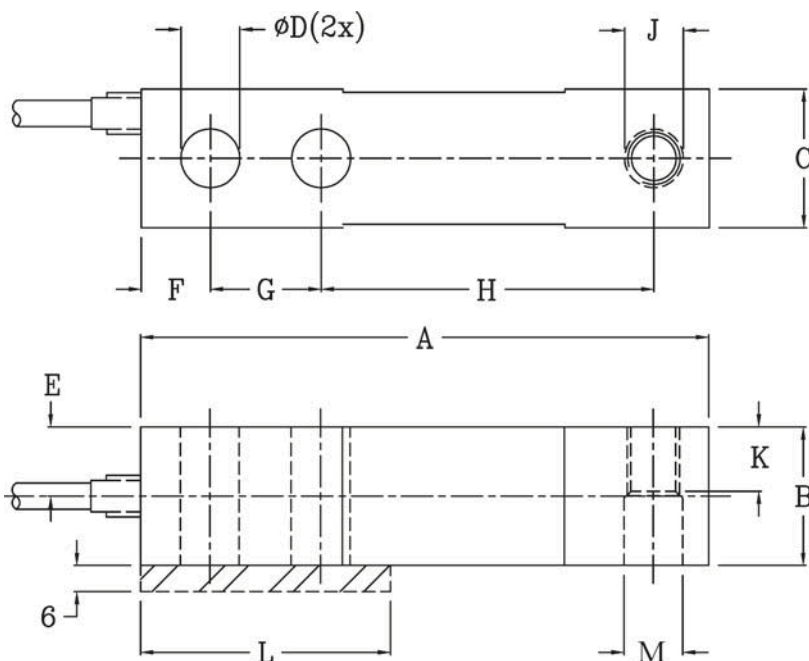
# 9123 SPECIFICATIONS

PARAMETER	VALUE				UNIT
Standard capacities ( $E_{max}$ )	500, 1000, 2000, 5000				kg
Accuracy class according to OIML R-60 / NTEP	Non-Approved	NTEP III	C3	C4	
Max. no. of verification intervals ( $n_{IC}$ )		5000	3000	4000	
Min. verification interval ( $V_{min}=E_{max}/Y$ )		--	$E_{max}/6000$	$E_{max}/8000$	
Min. verification interval, type MR		--	$E_{max}/10000$	$E_{max}/18000$	
Rated output (=S)	3				mV/ V
Rated output tolerance	0.003				±mV/ V
Zero balance	1.0				±% FSO
Combined error *	0.0500	0.0200	0.0230	0.0180	±% FSO
Minimum dead load output return *	0.0500	0.0250	0.0170	0.0130	±% applied load
Non-repeatability *	0.0700	0.0100	0.0350	0.0260	±% FSO
Creep error (30 minutes)*	0.0600		0.0250	0.0180	±% applied load
Temp. effect on min. dead load output	0.0250	(0.0008)	0.0120	0.0088	±% FSO/5°C (°F)
Temp. effect on min. dead load output, type MR			0.0070	0.0039	±% FSO/5°C
Temperature effect on sensitivity	0.0250	(0.0010)	0.0088	0.0065	% applied load/5°C (°F)
Minimum dead load	0				% $E_{max}$
Maximum safe over load	150				% $E_{max}$
Ultimate over load	300				% $E_{max}$
Maximum safe side load	100				% $E_{max}$
Deflection at $E_{max}$	0.4/ 0.8/ 1.0/ 1.1				mm
Excitation voltage	5 to 12				V
Maximum excitation voltage	15				V
Input resistance	350±3.5				Ω
Output resistance	350±3.5				Ω
Insulation resistance	≥ 5000				MΩ
Compensated temperature range	-10 to +40				°C
Operating temperature range	-40 to +80				°C
Storage temperature range	-50 to +90				°C
Element material	9123: stainless steel, 5123: nickel plated alloy steel				
Sealing (DIN 40.050 / EN60.529)	IP67				
Recommended torque on fixation bolts	0.5 - 2t: 149 / 5t: 271				Nm

\* Applies for the temperature range -10 to +40 °C

FSO: Full Scale Output

## OUTLINE DIMENSIONS



Capacity	0.5 → 2t	5t
A	130.0	171.5
B	31.5	37.8
C	31.8	38.1
ØD	13.5	20.7
E	15.7	19.1
F	15.7	19.1
G	25.4	38.1
H	76.2	95.3
J	M12×1.75-6H	M20×2.5-6H
K	15.7	19.1
L	57.2	76.2
ØM	13.5	20.7

Note: Dimensions in millimeters

### Cable specifications:

Cable length: 6m  
 Excitation + Red  
 Excitation - Black  
 Output + Green  
 Output - White  
 Shield Transparent

Cable screen is not connected to load cell body. Performance may be affected if load cell cables are shortened.

**REVERE TRANSDUCERS EUROPE B.V.**  
 Ramshoorn 7  
 Postbus 6909, 4802 HX Breda  
 The Netherlands  
 Tel: (+31) 76-5480700  
 Fax: (+31) 76-5412854  
 E-mail: info@revere.nl  
[www.revere.nl](http://www.revere.nl)

**Rabbit Control Systems**  
 Automation & Control Engineering



803, Riqqa Palace Building  
 Al-Maktum Ave. opposite Deira Etisalat  
 P.O.Box 181802 Dubai, UAE  
 Tel: +9714 - 2270081  
 Fax: +9714 - 2239962  
 E-mail: rcsc@eim.ae  
[www.rcs-co.com](http://www.rcs-co.com)