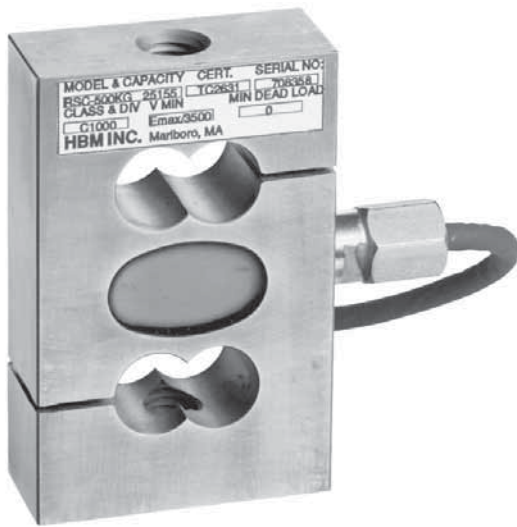




RSCA...

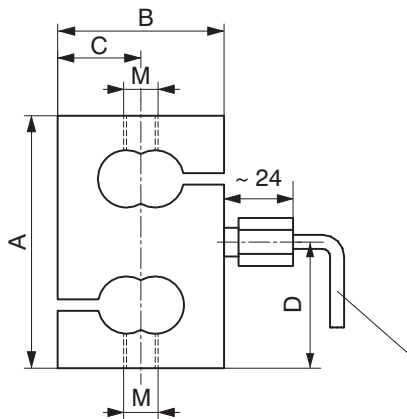
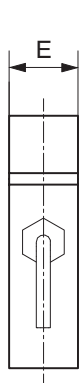
Load cells



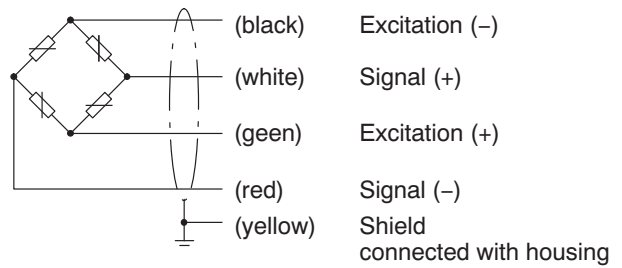
Special features

- Load cell with strain gage measuring system
- Nominal (rated) capacities: 50 kg ... 5 t
- Stainless steel
- Legal for trade verification up to 3000 d (OIML R60)
- Meets EMC / ESD requirements according to EN 45 501
- Explosion proof versions according to ATEX 95 (optional)

Dimensions (in mm; 1 mm= 0.03937 inches)



Wirig code (4-wire circuit)



Cable 7.6 m, Ø ~ 5 mm

E_{max} RSCA...	A	B	C	D	E	M
50 kg; 100 kg	62	50.8	25.4	31	15	M8x1.25
200 kg; 500 kg; 1 t	87.3	57.2	28.6	43.7	24	M12x1.75
2 t	100	69.8	34.9	50	30.2	M24x2
5 t	100	76.2	38.1	50	36.6	M24x2



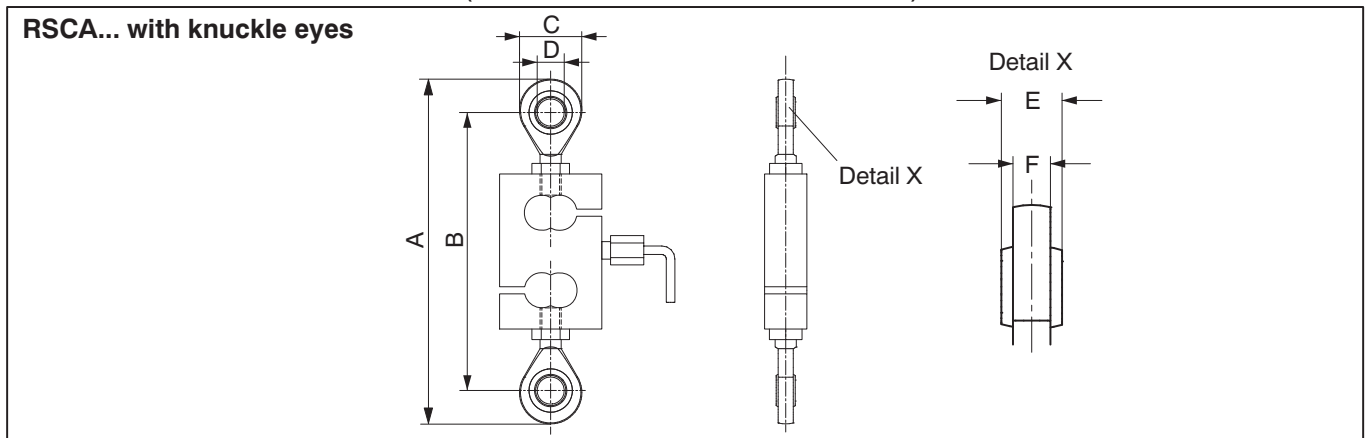
Technical Data

Type		RSCA C1						RSCA C3				
Accuracy class according to OIML R 60		C1						C3				
Max. numbers of load cell intervals (n_{LC})		1000						3000				
Nominal (rated) capacity (E_{max})		50 kg	100 kg	200 kg	500 kg	1 t	2 t	5 t	500 kg	1 t	2 t	5 t
Minimum LC verification interval (v_{min})	% of E_{max}	0.0286						0.0120				
Sensitivity (C_n)	mV/V	2						2				
Sensitivity tolerance	%	± 0.2500						± 0.2500				
Temperature effect on sensitivity (TK_C) ¹⁾	% of C_n	± 0.0230 ¹⁾						± 0.0140 ¹⁾				
Temperature effect on zero signal (TK_0)	/ 10 K	± 0.0400						± 0.0170				
Hysteresis error (d_{hy}) ¹⁾		± 0.0500 ¹⁾						± 0.0170 ¹⁾				
Non-Linearity (d_{lin}) ¹⁾	% of C_n	± 0.1000 ¹⁾						± 0.0180 ¹⁾				
Creep (d_{cr}) 30 min.		± 0.0490						± 0.0250				
Input resistance (R_{LC}) (nominal)	Ω	350						350				
Output resistance (R_0)		350 ± 1.5						350 ± 1.5				
Reference excitation voltage (U_{ref})	V	5						5				
Nominal range of excitation voltage (B_U)		0.5 ... 12						0.5 ... 12				
Insulation resistance (R_{is})	GΩ	> 5						> 5				
Nominal range of ambient temperature (B_T)	°C [°F]	-10 ... +40 [+14 ... +104]						-10 ... +40 [+14 ... +104]				
Service temperature range (B_{tu})		-30 ... +70 [-22 ... +158]						-30 ... +70 [-22 ... +158]				
Storage temperature range (B_{tl})		-50 ... +85 [-58 ... +185]						-50 ... +85 [-58 ... +185]				
Limit load (E_L)	% of E_{max}	150						150				
Breaking load (E_d)		250						250				
Permissible dynamic load (F_{srel}) (vibration amplitude according to DIN 50100)		70						70				
Deflection at E_{max} (s_{nom}), approx.	mm	0.15		0.25	0.38	0.46	0.15	0.25	0.38	0.46		
Weight (G) with cable, approx.	kg	0.4	0.77		1.6	1.8	0.77	1.6	1.8			
Protection class accord. to EN60529 (IEC529)		IP65 (tightened test conditions 1 m water column / 30 min.)										
Material: Measuring body / Application sealing Cable fitting / Cable sheath		stainless steel / Polyurethane stainless steel, gasket from Perbunan / Polyurethane										

¹⁾ The data for Non-Linearity (d_{lin}), Hysteresis error (d_{hy}) and Temperature effect on sensitivity (TK_C) are typical values. The sum of these data meets the requirements according to OIML R60.

Optionally Explosion-proof versions according to ATEX: II 3 G EEx nA II T6 (Zone 2)
II 3 D IP65 (Zone 22 for non-conductive dust)

Dimensions and Accessories (in mm; 1 mm = 0.03937 inches)



E_{max} RSCA...	Knuckle eyes	A	B	∅ C	∅ DH7	E	F
50 kg + 100 kg	U1R/200KG/ZGW (2x)	133 ... 154	109 ... 130	24	8	12	9
200 kg; 500 kg; 1 t	U2A/1T/ZGUW (2x)	190 ... 203	158 ... 171	32	12	16	12
2 t	U2A/5T/ZGUW (2x)	291 ... 320	231 ... 260	60	25	31	22
5 t	U2A/5T/ZGUW (2x)	314 ... 320	260 ... 266	60	25	31	22

Regional Distributor



803, Riqqa Palace Building
Al-Maktum Ave.
P.O.Box 181802 Dubai, UAE
Tel: +9714 - 2270081
Fax: +9714 - 2239962
E-mail: rcsco@eim.ae
www.rcs-co.com

Hottinger Baldwin Messtechnik GmbH

Im Tiefen See 45, D-64293 Darmstadt, Germany
Tel.: +49 6151 8030; Fax: +49 6151 803 9100
E-mail: support@hbm.com www.hbm.com



measurement with confidence