

U1A

Force Transducer

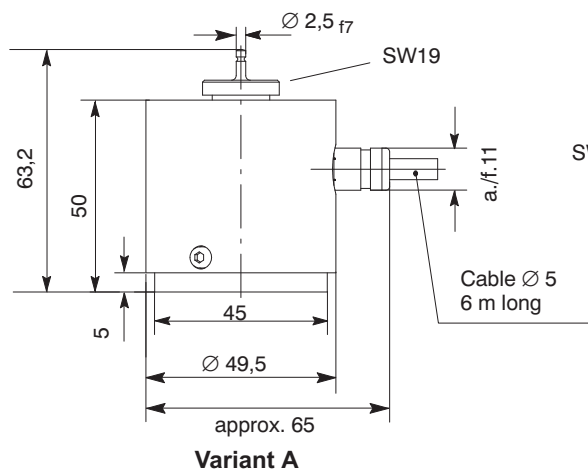
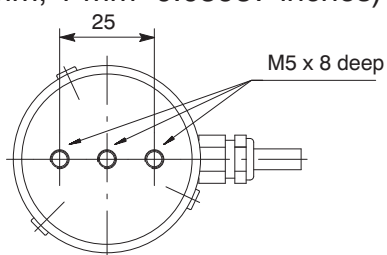


Special features

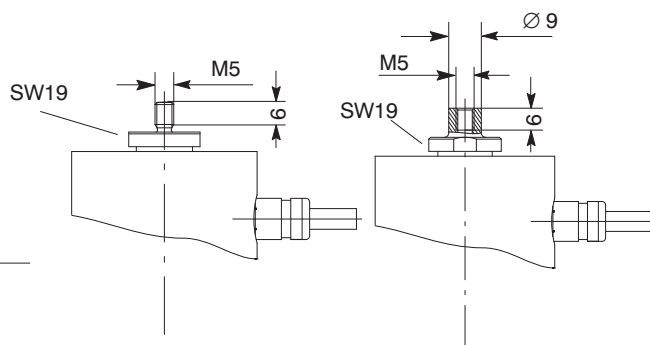
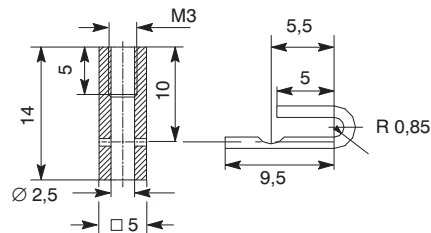
- Tensile force / compressive force transducer
- Nominal forces 10 N ... 50 N
- Integrated overload protection
- Side-force support
- Variable force introduction

Dimensions (in mm; 1 mm=0.03937 inches)

Dimensional variation
in accordance with
DIN ISO 7168 - mK



Coupling for knuckle eye (variant A)



Variant B

Variant C

Specifications

Type			U1A		
Accuracy class			0.1		
Nominal force		N	10	20	50
Nominal sensitivity	C_{nom}	mV/V	2		
	rel. sensitivity deviation	d_c	0.2		
	rel. tensile-compressive sensitivity difference	d_{zd}	0.4		
	rel. deviation from zero	$d_{s,0}$	1		
	Rel. range of inversion ($0.2F_{nom}$ to F_{nom})	u	0.15		
Linearity deviation		d_{lin}	0.1		
Temperature effect on the sensitivity/10 K by reference to nominal sensitivity		TK_C	%		
Temperature effect on the zero signal/10 K by reference to nominal sensitivity		TK_0	%		
Effect of eccentricity / mm		d_E	%		
Rel. creep over 30 min		d_{crF+E}	%		
Input resistance		R_e	Ω		
Output resistance		R_a	Ω		
Isolation resistance		R_{is}	Ω		
Reference excitation voltage		U_{ref}	V		
Operating range of the excitation voltage		$B_{U,G}$	V		
Nominal temperature range		$B_{t,nom}$	$^{\circ}C$		
Operating temperature range		$B_{t,G}$	$^{\circ}C$		
Storage temperature range		$B_{t,S}$	$^{\circ}C$		
Reference temperature		t_{ref}	$^{\circ}C$		
Max. operational force		(F_G)	%		
Limit force		(F_L)	%		
Breaking force		(F_B)	%		
Static lateral limit force		(F_Q)	%		
Nominal displacement		S_{nom}	mm		
Fundamental resonance frequency		f_G	Hz		
Weight			kg		
Rel. permissible vibrational stress		F_{rb}	%		
Degree of protection to DIN EN 60529			IP 40		

Knuckle eyes

Options

Code	Option 1: Measuring range
010N	10 N
020N	20 N
050N	50 N

Code	Option 2: Force introduction
A	with pin
B	with M5 external thread
C	with M5 internal thread

Code	Option 3: Cable type
K	with cable, 6 m, free ends
M	with cable, 6 m, MS connector
D	with cable, 6 m, D15 connector

Bestell-Beispiel
K-U1A- 0 1 0 N - A K

Scope of supply: transducer and corresponding force introduction piece, coupling for knuckle eye for Code A

Accessories: (not included in scope of supply)

Upper knuckle eye for coupling M3 (Option A), 1-U1/5kg/ZGO

Upper knuckle eye for internal thread M5 (Option C), 1-U1/5kg/ZGU

Lower knuckle eye for internal thread M5 (all types), 1-U1/5kg/ZGU

Regional Distributor



803, Riqqa Palace Building
Al-Maktum Ave.
P.O.Box 181802 Dubai, UAE
Tel: +9714 - 2270081
Fax: +9714 - 2239962
E-mail: rcsco@eim.ae
www.rcs-co.com

Hottinger Baldwin Messtechnik GmbH

Im Tiefen See 45, D-64293 Darmstadt, Germany
Tel.: +49 6151 8030; Fax: +49 6151 803 9100
E-mail: support@hbm.com www.hbm.com



measurement with confidence